

If the variable voltage is coming from the input loading voltage, you have a resistor type of load.
 If the variable voltage is from a zener regulated voltage, you have a constant current load.
 If the variable voltage is coming from the input loading voltage, but is inverted ! you have a constant watt load.

Constant Current Dummy Load – Main

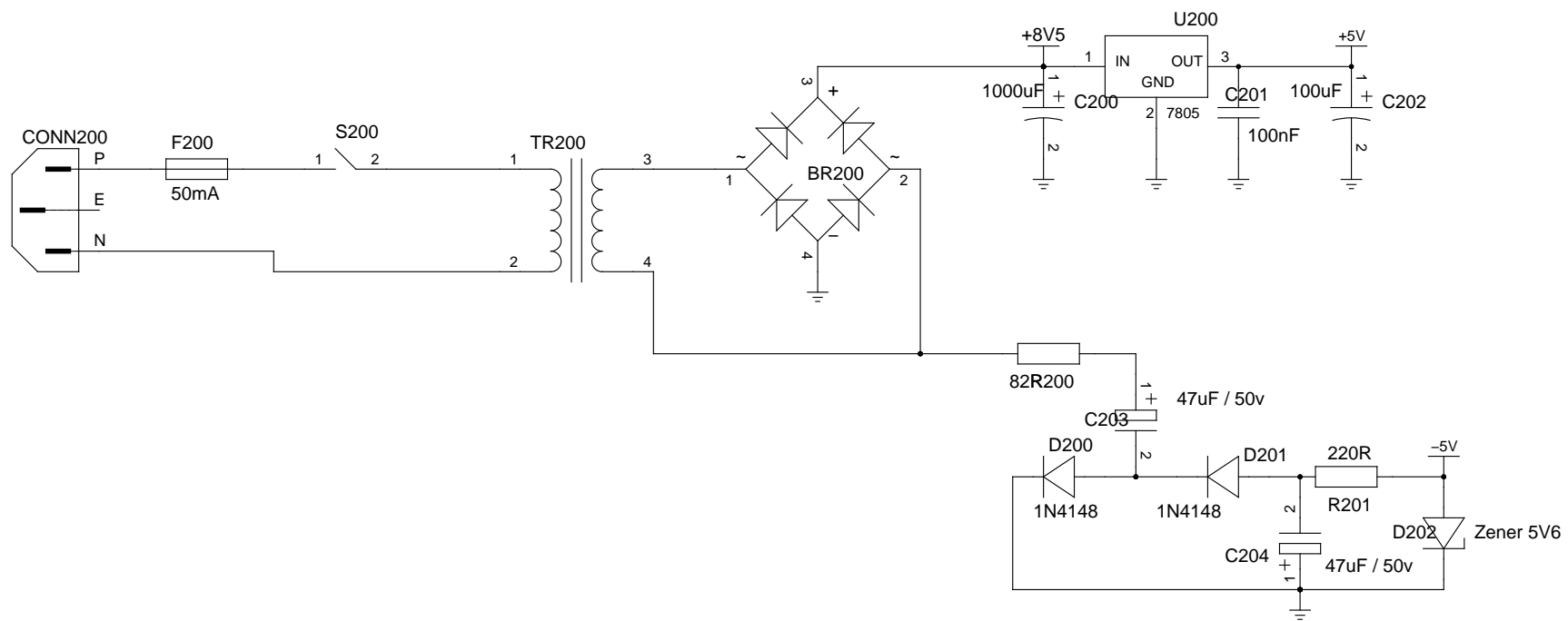
TITLE

FILE:

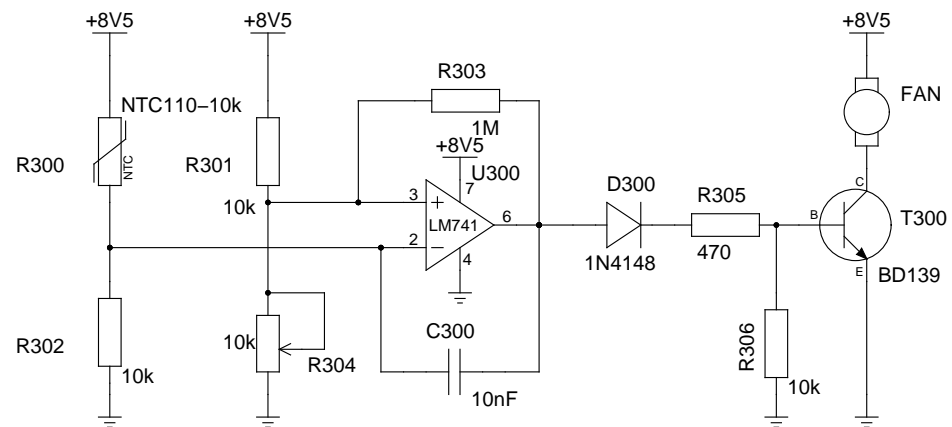
PAGE 1 OF 3

REVISION: 4

DRAWN BY: www.leniwiiec.org <info@leniwiiec.org>



Constant Current Dummy Load – Power Supply				
TITLE				
FILE:	REVISION: 4			
PAGE 2 OF 3	DRAWN BY: www.leniwiiec.org <info@leniwiiec.org>			



Constant Current Dummy Load – Termostat				
TITLE				
FILE:			REVISION: 4	
PAGE	3	OF	3	DRAWN BY: www.leniwiiec.org <info@leniwiiec.org>